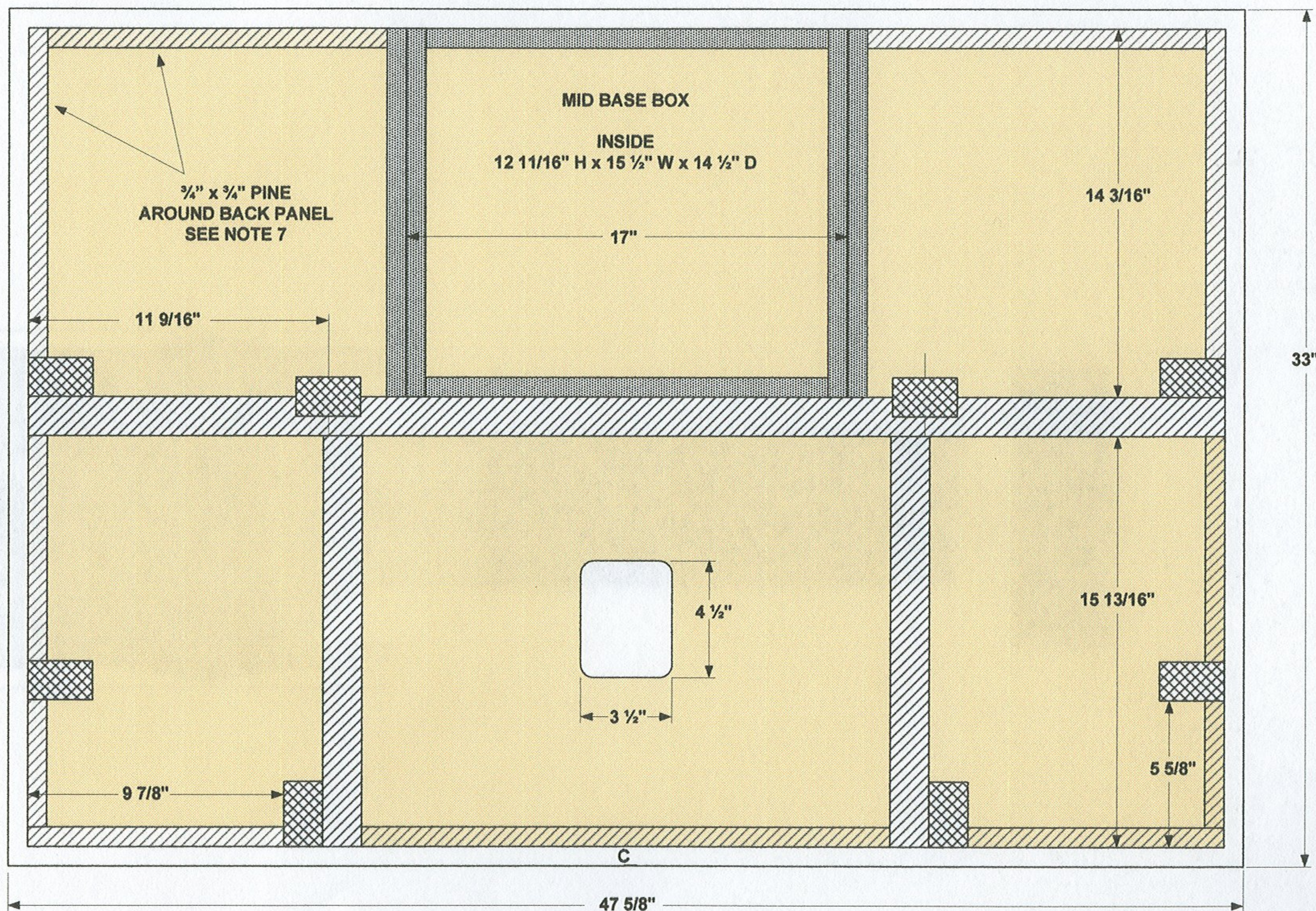


4350 CABINET BRACING #2



NOTE 7

ALL 4350'S THAT I HAVE SEEN, FROM THE VERY EARLY MODELS THRU LATE 4350'S WITH ALNICO COMPONENTS, HAVE HAD A 3/4" x 3/4" PINE STRIP AROUND THE BACK PANEL. IT IS GLUED AND STAPLED TO THE BACK PANEL AND ADJACENT PANEL SURFACE. ALL CABINET BRACES THAT INTERSECT THIS STRIP ARE NOTCHED OUT 7/8" x 7/8" TO CLEAR THE STRIP. I HAVE OBSERVED TWO PAIRS OF 4350B'S THAT DO NOT HAVE THIS BORDER STRIP.